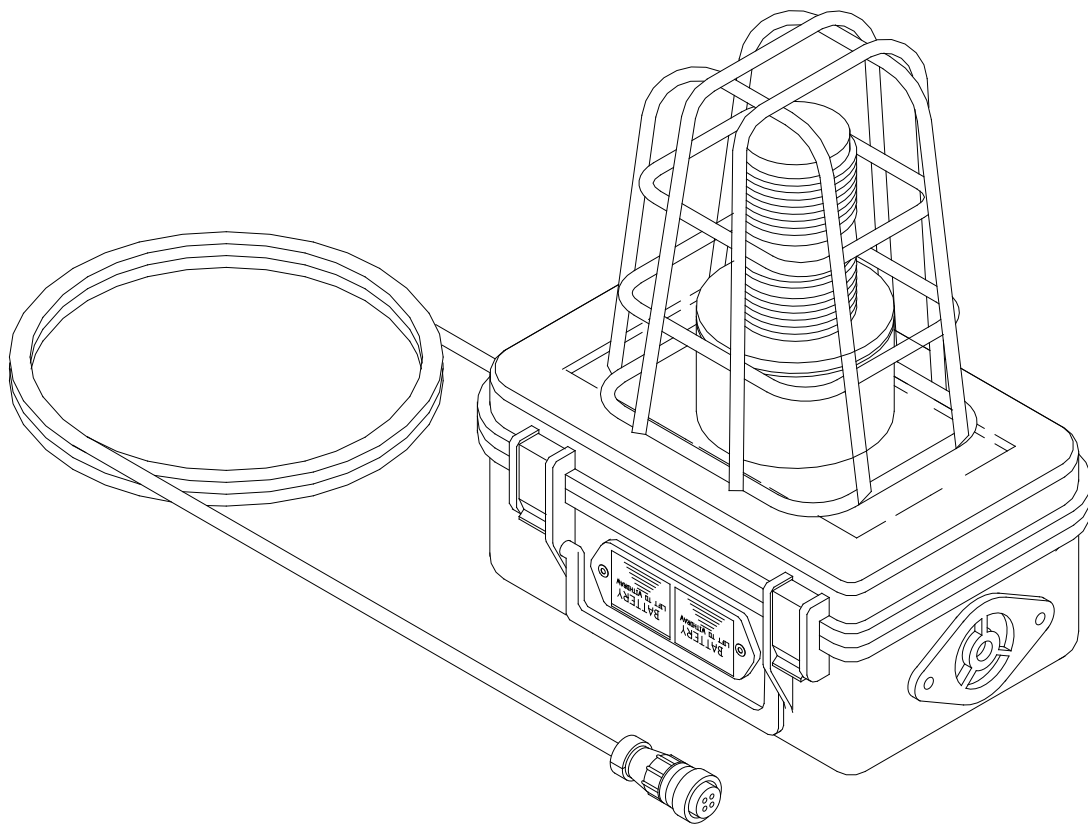




OPERATING INSTRUCTIONS AND REPLACEMENT PARTS

**Models: 50-ALM, 50-ALMAA, 50-ALMH, 50-ALMP, 50-ALMST
50-ALMSTAA, 50-ALMSTH, 50ALMSTHAA, 50-ST, 50-ALM-2J**



WARNING

This manual must be read carefully and followed by all persons who have or will have the responsibility for using or servicing this equipment. This equipment will perform as designed only if used according to the instructions. Otherwise it could fail to perform as designed, causing personal injury or death.

AIR SYSTEMS INTERNATIONAL, INC.

829 Juniper Crescent, Chesapeake, Va, 23320

Telephone (757) 424-3967

Toll Free 1-800-866-8100

Fax No. (757) 424-5348

www.airsystems.com.

e-mail: sales@airsystems.com

Operation

Model: 50-ALM-2J

STEP 1)

Install (2) 9 volt batteries in the battery holder. Be sure to install batteries correctly.

STEP 2)

Attach the cable assembly to the remote alarm jack located on the Breather Box.

STEP 3)

Attach the remote alarms to the remote alarm output jacks.

STEP 4)

If the remote alarm is connected to a device that monitors for CO or CO/O₂, locate the "ON/OFF/TEST" switch on the right endplate of the CO or CO/O₂ monitor. Hold the switch in the "TEST" position and check the remote alarm, the audible alarm (if installed) should be pulsing and the strobe (if installed) should be flashing. Release the switch to the "ON" position. The unit is now operational.

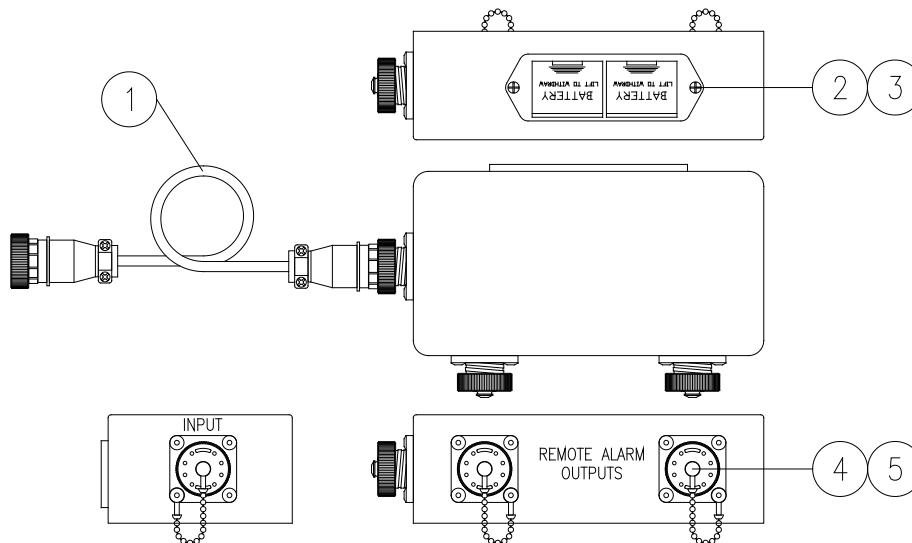
STEP 5)

If the remote alarm is connected to a device that signals a loss of pressure, locate the low pressure alarm ON/OFF switch and place it in the "ON" position. The audible alarm (if installed) should be pulsing and the strobe (if installed) should be flashing. Note: Pressure must be below 500psi on high pressure units or below 50psi on low pressure units for the alarms to activate. The unit is now operational.

Troubleshooting

- If the remote alarm is not functioning or the alarm signal is very weak, replace the 9 volt batteries in the unit.
- If one of the remote alarm jacks is not working; remove the cover and check for loose connections.

Replacement Parts



ITEM #	DESCRIPTION	PART #
1	3' CABLE ASSEMBLY	50ALM2JCA
2	BATTERY HOLDER	MONC006
3	9 VOLT BATTERY	ELB9V
4	REMOTE ALARM JACK	ELJP004
5	DUST CAP	ELJP005

Operation

Models: 50-ALM, 50-ALMH, 50-ALMST, 50-ALMSTH, 50-ST

STEP 1)

If the remote alarm is connected to a device that monitors for CO or CO/O₂, locate the “ON/OFF/TEST” switch on the right endplate of the CO or CO/O₂ monitor. Hold the switch in the “TEST” position and check the remote alarm, the audible alarm (if installed) should be pulsing and the strobe (if installed) should be flashing. Release the switch to the “ON” position. The unit is now operational.

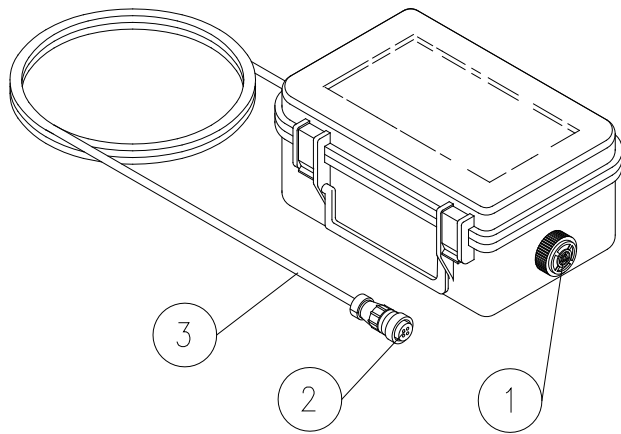
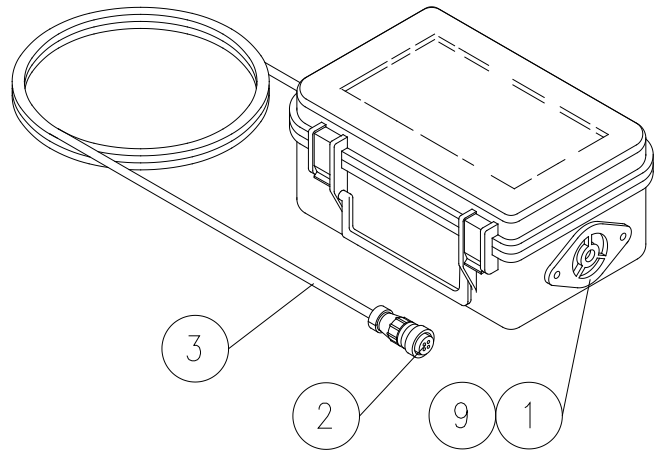
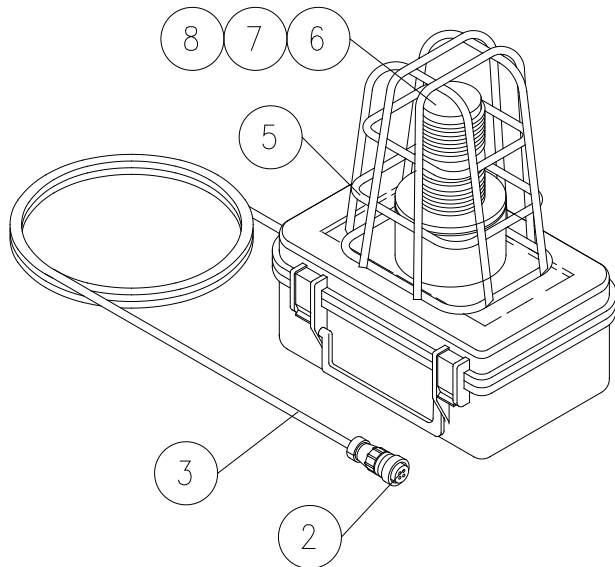
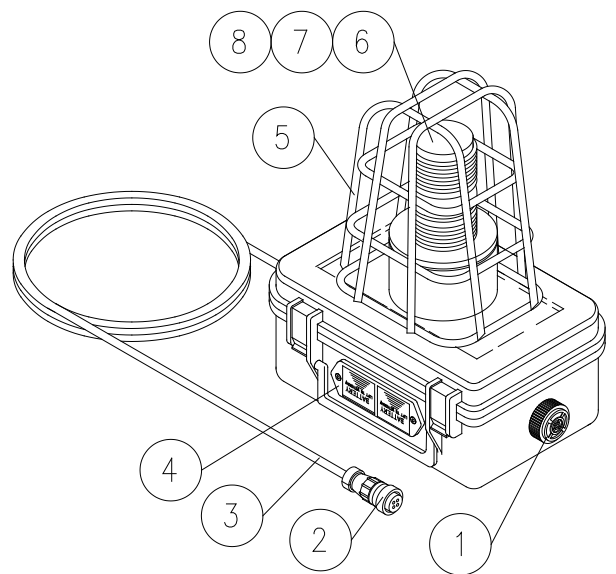
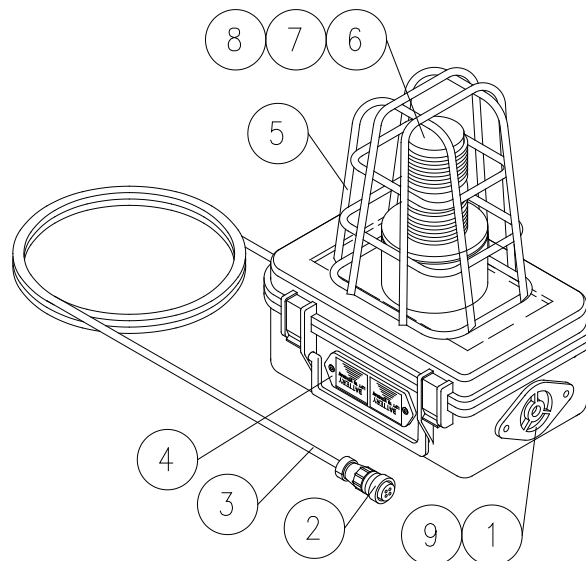
STEP 2)

If the remote alarm is connected to a device that signals a loss of pressure, locate the low pressure alarm ON/OFF switch and place it in the “ON” position. The audible alarm (if installed) should be pulsing and the strobe (if installed) should be flashing. Note: Pressure must be below 500psi on high pressure units or below 50psi on low pressure units for the alarms to activate. The unit is now operational.

Troubleshooting

PROBLEM	SOLUTION
Remote alarm does not operate but primary alarm does.	Check batteries in primary unit and remote alarm and replace if necessary. Some remote alarm models do not have 9 volt batteries.
	Check remote alarm cable for damage and repair or replace.
	Make sure remote alarm cable is properly connected to remote alarm jack on primary unit.
	Open lid on remote alarm and check for loose or missing connections on audible alarm and/or strobe.

Note: “Primary unit” refers to the unit the remote alarm is connected to. This could be a unit with a CO or CO/O₂ monitor or a unit with a low pressure alarm.

Model: 50-ALM**Model: 50-ALMH****Model: 50-ST****Model: 50-ALMST****Model: 50-ALMSTH**

Replacement Parts

ITEM #	DESCRIPTION	50-ALM	50-ALMH	50-ST	50-ALMST	50-ALMSTH
1	AUDIBLE ALARM	ELLS004	ELLS003	N/A	ELLS004	ELLS003
2	4 POSITION CONNECTOR	ELJP003	ELJP003	ELJP003	ELJP003	ELJP003
3	CABLE (SOLD BY THE FOOT)	ELCB006	ELCB006	ELCB006	ELCB006	ELCB006
4	BATTERY HOLDER	N/A	N/A	N/A	MONC006	MONC006
5	STROBE GUARD	N/A	N/A	ELDS011	ELDS011	ELDS011
6	RED STROBE	N/A	N/A	ELDS007	ELDS007	ELDS007
7	REPLACEMENT BULB	N/A	N/A	ELDS010	ELDS010	ELDS010
8	RED LENS	N/A	N/A	ELDS010L	ELDS010L	ELDS010L
9	ALARM BRACKET	N/A	PBK-ALMSTH	N/A	N/A	PBK-ALMSTH

Operation

Models: 50-ALMAA, 50-ALMSTAA, 50ALMSTHAA

STEP 1)

If the remote alarm is connected to a device that monitors for CO or CO/O₂, locate the "ON/OFF/TEST" switch on the right endplate of the CO or CO/O₂ monitor. Hold the switch in the "TEST" position and check the remote alarm, the audible alarm (if installed) should be sounding. Release the switch to the "ON" position.

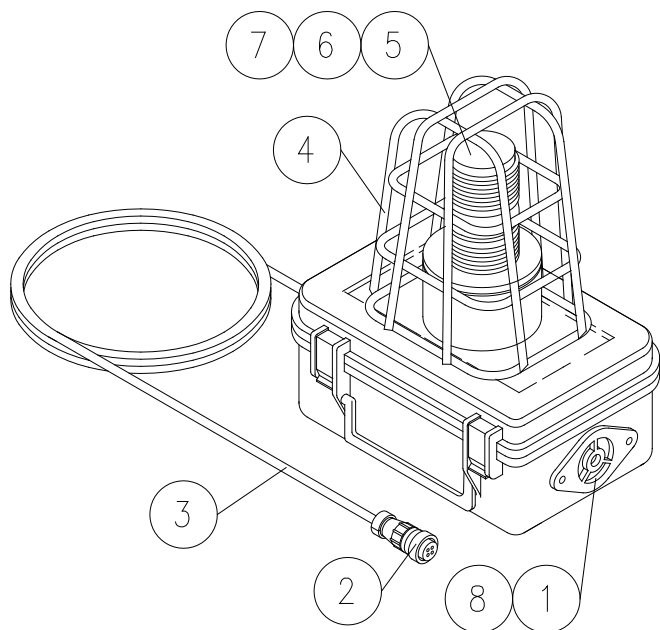
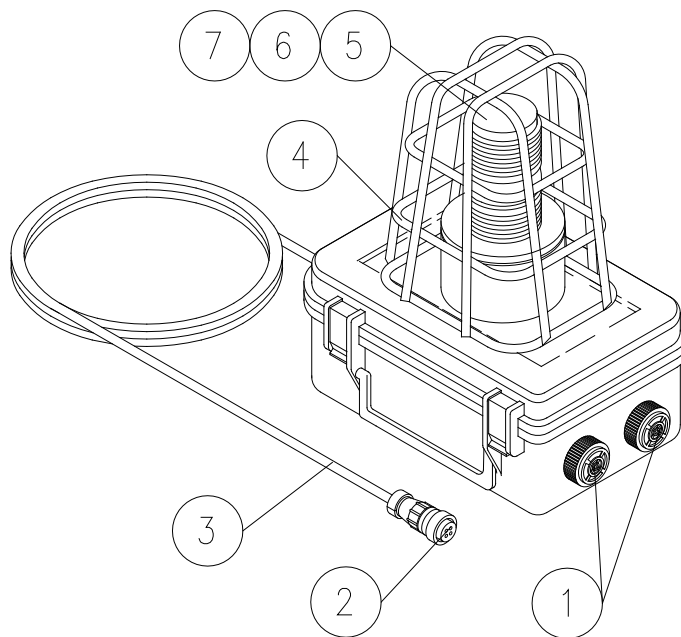
STEP 2)

If the remote alarm is connected to a device that signals back-up air, locate the back-up air alarm ON/OFF switch and place it in the "ON" position. If pressure is below 50 psi the audible alarm should be sounding and the strobe (if installed) should be flashing. The unit is now operational.

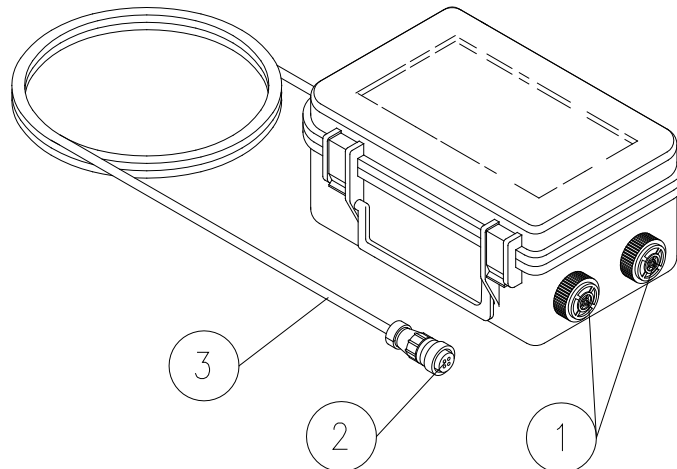
Note: Strobes activate in back-up air mode only on models 50ALMSTHAA and 50-ALMSTAA.

Troubleshooting

PROBLEM	SOLUTION
Remote alarm does not operate but primary alarm(s) do.	Check batteries in primary unit and remote alarm and replace if necessary. Some remote alarm models do not have 9 volt batteries.
	Check remote alarm cable for damage and repair or replace.
	Make sure remote alarm cable is properly connected to remote alarm jack on primary unit.
	Open lid on remote alarm and check for loose or missing connections on audible alarm and/or strobe.

Model: 50ALMSTHAA**Model: 50-ALMSTAA**

Note: Strobes activate in back-up air mode only on models 50ALMSTHAA and 50-ALMSTAA.

Model: 50-ALMAA

ITEM #	DESCRIPTION	50ALMSTHAA	50-ALMSTAA	50-ALMAA
1	AUDIBLE ALARM	ELLS003	ELLS004	ELLS004
2	4 POSITION CONNECTOR	ELJP003	ELJP003	ELJP003
3	CABLE (SOLD BY THE FOOT)	ELCB007	ELCB018	ELCB018
4	STROBE GUARD	ELDS011	ELDS011	N/A
5	RED STROBE	ELDS007	ELDS007	N/A
6	REPLACEMENT BULB	ELDS010	ELDS010	N/A
7	RED LENS	ELDS010L	ELDS010L	N/A
8	ALARM BRACKET	PBK-ALMSTH	N/A	N/A

Operation

Models: 50-ALMAA, 50-ALMSTAA, 50ALMSTHAA

STEP 1)

Turn the regulator knob in the remote alarm box fully counterclockwise.

STEP 2)

Pressurize the primary device.

STEP 3)

Set primary device in alarm mode. This could be high CO, backup air, power loss, or low pressure.

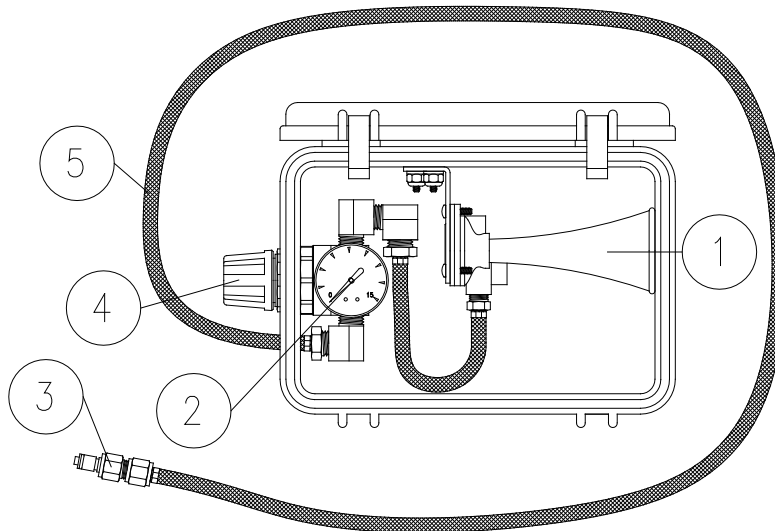
STEP 4)

Turn regulator knob in remote alarm box clockwise until horn reaches desired sound level (20 psi is usually sufficient).

STEP 5)

Reset the primary device to normal operation. The unit is now operational.

Model: 50-ALMP



ITEM #	DESCRIPTION	50-ALMHAA
1	PNEUMATIC HORN	GAMLHORN
2	PRESSURE GAUGE	GA1560B
3	PLUG	QD129
4	PRESSURE REGULATOR	WL013
5	3/16" X 5/16" BRAIDED HOSE/PER FOOT	HOS004

Warranty

Air Systems' manufactured equipment is warranted to the original user against defects in workmanship or materials under normal use for one year from the date of purchase. Any part which is determined by Air Systems to be defective in material or workmanship will be, as the exclusive remedy, repaired or replaced at Air Systems' option. This warranty does not apply to electrical systems or electronic components. Electrical parts are warranted, to the original user, for 90 days from the date of sale. During the warranty period, electrical components will be repaired or replaced at Air Systems' option.

NO OTHER WARRANTY, EXPRESSED OR IMPLIED, AS TO DESCRIPTION, QUALITY, MERCHANTABILITY, FITNESS FOR A PARTICULAR PURPOSE, OR ANY OTHER MATTER IS GIVEN BY AIR SYSTEMS IN CONNECTION HEREWITH. UNDER NO CIRCUMSTANCES SHALL THE SELLER BE LIABLE FOR LOSS OF PROFITS, ANY OTHER DIRECT OR INDIRECT COSTS, EXPENSES, LOSSES, OR DAMAGES ARISING OUT OF DEFECTS IN, OR FAILURE OF THE PRODUCT OR ANY PART THEREOF.

The purchaser shall be solely responsible for compliance with all applicable Federal, State and Local OSHA and/or MSHA requirements. Although Air Systems International believes that its products, if operated and maintained as shipped from the factory and in accordance with our "operations manual", conform to OSHA and/or MSHA requirements, there are no implied or expressed warranties of such compliance extending beyond the limited warranty described herein. Product designs and specifications are subject to change without notice. Rev. 2, 12/98

Air leaks are not covered under warranty except when they result from a defective system component, i.e. an on/off valve or regulator or upon initial delivery due to poor workmanship. Air leaks due to poor delivery or damage will be covered under delivery claims. Minor air leaks are part of routine service and maintenance and are the responsibility of the customer just as are filters and oil changes.